

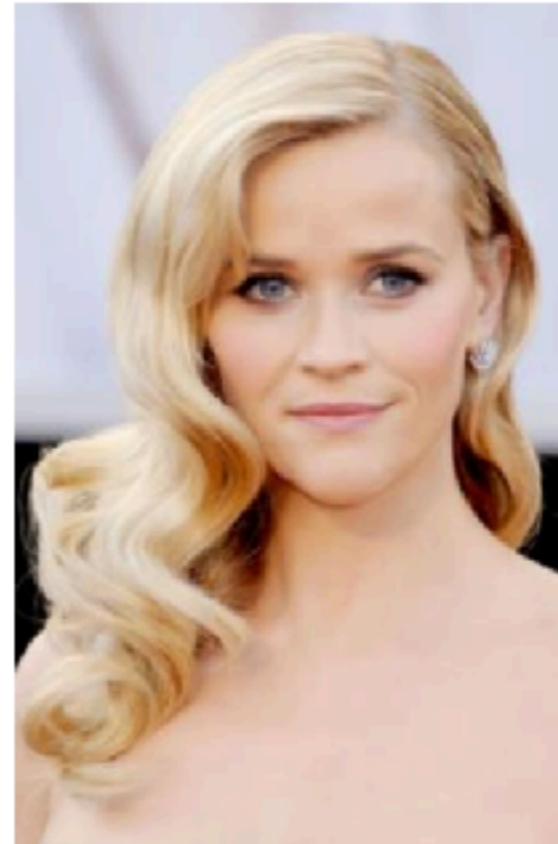
BLONDES:

Video #1 (Perfect golden Balayage)



Need a blonde model, any shade

Video #2 (Double process, universal application)



Need a blonde model, any shade that is willing to go light blonde all over (not highlights)

FASHION SHADES:

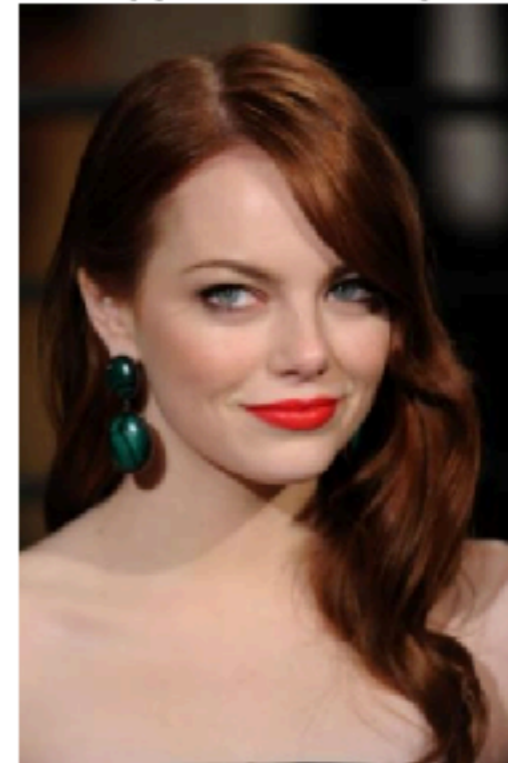
Video #1 (Shadow root or
Ombre using Jewels)

Need model
with faded
color



Video #2 (Universal
application, Red)

Need model
with red hair;
any shade of
red will do



**NOTE: For Fashion Shade above:
Hair will need to be lifter to apply
color, and color will go to root:
Color will be rinse. Color
correction will be provide on
March 13 if model/ agency wants.**

**NOTE: Any Redhead to go
Red as above**

COVERAGE:

Video #1 (Universal application, Rich Brown)

Need model with grey regrowth (an inch) or totally grey



NOTE: Overall coverage (can be adapted to to model's color but prefer someone who can do the brown if needed. Open to blondes.

Video #2 (Chocolate + Carmel Ombre)

Need model with grey regrowth (an inch) or totally grey



NOTE: this is now an ombre with chocolate & Carmel shades